



Save a tree as you lower your rising network printing costs with ITC Systems' customizable print control software solutions.

FUNCTIONALITY

ITC Systems' Print Manager software is the premier cost recovery solution for network printing environments. Whether you wish to implement a pay for print solution or a tracked and bill back administration solution, our Print Manager meets your requirements. Capable of monitoring an unlimited number of print queues and printers, Print Manager's user-friendly interface and seamless payment facility make it easy for your patrons to display, select, pay for, and print their jobs on a self-serve basis. Staff print tracking is achieved through their login, LDAP or Active Directory.

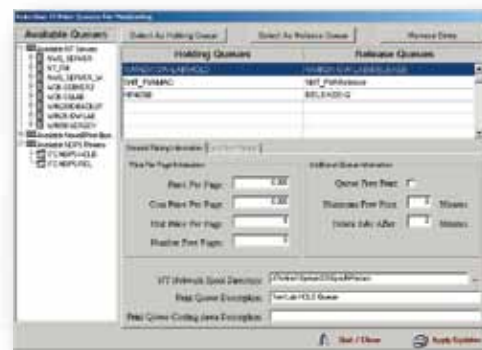
The Release Stations GUI is easily customized and configured through drag

and drop column ordering. To protect against system tampering, elaborate password protected security features have been built in to lock down the PC.

Given the high cost of paper and printing supplies, ITC Systems' Print Manager will pay for itself within a few short months and thereafter convert what was once a major ongoing expense area into a key profit center. Our range of print management solutions will eliminate wasted paper, recover printing supplies, reduce labor cost, and improve access to electronic and hard copy service. All of this points to being environmentally friendly and a supporter of all things green.

FEATURES & BENEFITS

- Eliminate wasted paper and toner and recover the cost of your printing supplies
- Compatible with most printers, existing network servers, PCs and a variety of card systems
- Allows you to leverage your existing investments
- Windows-based, making it easy to install, maintain and operate
- Operates in both network and stand alone environments for maximum flexibility
- Password security features allow you to protect your patron's privacy
- Uses LDAP/Active Directories to track and log printing activities



Browse, select and set up your configuration with Print Manager's intuitive interface.

APPLICATIONS

- Libraries
- Universities/Colleges
- Computer Labs
- Anywhere a "charge for print" is required
- Business Center
- Internet Café

Be Green



CUSTOMIZABLE & CONFIGURABLE FOR YOUR NEEDS

Whether you choose a standard or custom configuration, all of Print Manager's modules are designed to count the pages of print jobs and offer an easy and cost-effective way to control and recover your rising network printing cost.

Server: Module 6040-S

Best suited for large systems and high-volume installations or when coupled with ITC Systems' Multiplan online account-based solution. Capable of handling centralized or distributed printing across a campus environment with an assortment of printers and MFD's.

The Server Module's configuration improves system performance and network traffic by moving page monitoring and counting processes away from the Print Release Station. The 6040-S monitors the jobs, counts the pages leaving the release station to display print jobs and manage payment.



Server module set up screen.

Client Release Station: Module 6040-C

In this popular configuration is recommended for low to moderate volume installations, the software resides on the release station's PC. It effectively manages jobs on the network, count pages, deletes stale jobs, logs each transaction, and charges for jobs via a payment device linked to its COM port.

For high volume printing the Release Station program interacts with the print server to effectively manage the charge and release of prints.

To print, patrons enter their method of payment (cash or card) into the payment device, select their print jobs and click 'Print' to release to the defined printer. Print Manager tracks the total cost for print jobs, total number of pages to print and after the job is released, displays the remaining balance.



Print Release Station user screen with jobs.

Popup for PC: Module 6040-PU

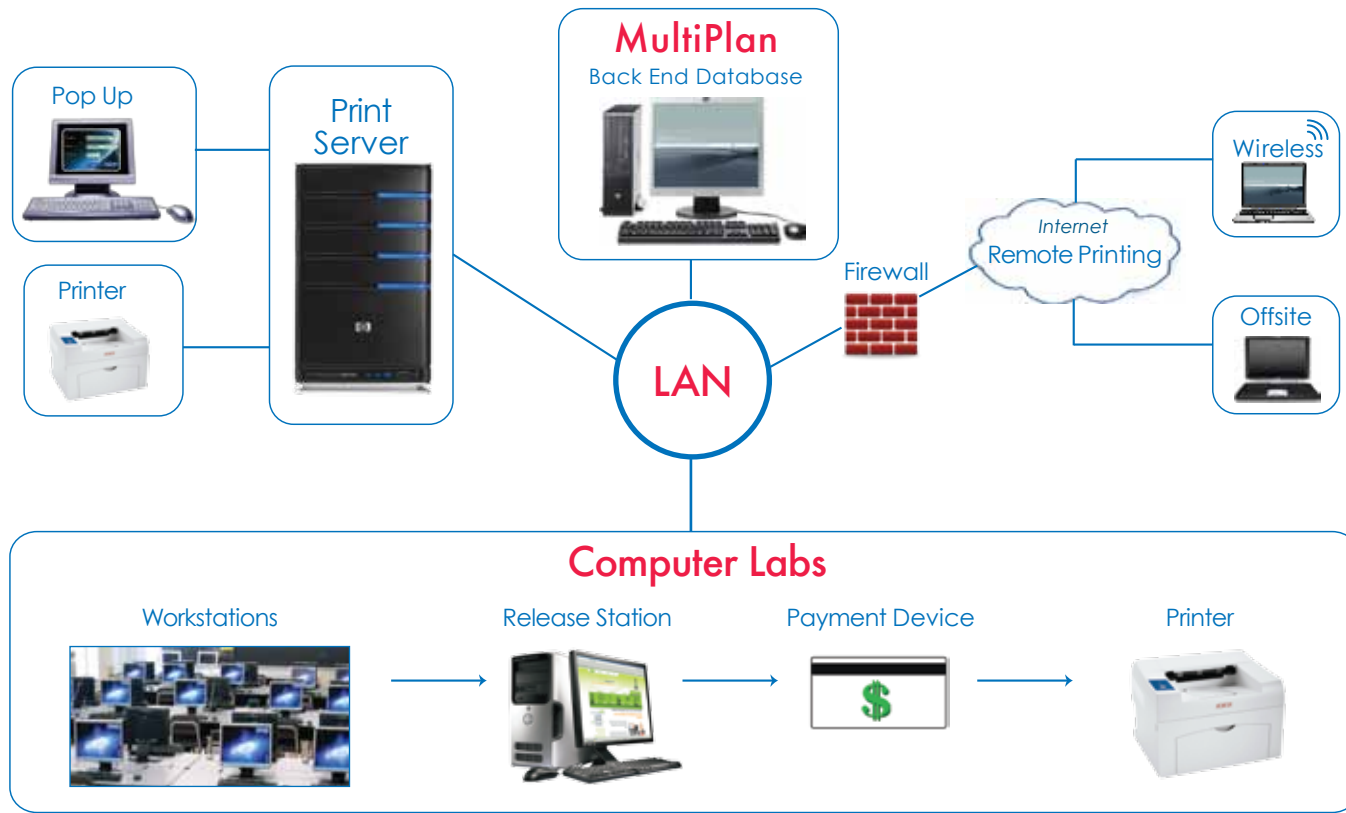
There are three main popups supplied: pay for print, print tracking and MAC popup. Frequently combined with Module 6040-C, Print Manager's unique Popup for PC Module works with the Client Release Station to enhance patron privacy.

Popup works by monitoring a local printer created on the client workstation where patrons will print. The desktop PC, where the print job originates, displays a popup screen instructing the patron to enter a user ID and password. At the release station, the patron is prompted to re-enter this information. When the correct user ID and password are entered, only that patron's print job(s) will be displayed on the print release screen. Patrons can change the job descriptions, job owner name and add passwords depending on how the Popup is configured.

Available as a standalone solution or in combination with Client Release Station or Server Modules. As a standalone system, the print job is counted and either charged for or tracked against the logged in users profile. When only Popup is used and print tracking is required, the user is tracked and a job number can be added if desired. This allows for charge back to individuals and also for budgeting department usages. Handy where you wish to control the printing across a network with ability to bill back or simply track usage.



Print Manager Network Architecture



PC Paytron: Module 6040-PAY

ITC Systems' PC Paytron Software is a vital cost recovery tool for unattended standalone systems that require a computer access controlled printing environment. The software is ideal for charging for time on the PC and/or printing. To utilize the PC or printer, the patron simply inserts their payment card in the card reader. Funds will be charged in accordance with the jobs performed. Different rates can be charged for time versus the printer chosen and print variables.

Remote and Wireless Printing: Module 6040-RP

With ITC Systems' Remote and Wireless Printing, geographical boundaries are eliminated as patrons are able to securely and wirelessly print over the Internet. Regardless of patrons' physical location, onsite or offsite, this web-based, self-serve application offers the ease and convenience not found in conventional, local printing application.

To print, a patron would simply go on the website, authenticate him/herself, choose a printer, set print options, and upload the document to be printed. Thereafter, ITC Systems' Print Manager Server will process the patron's print request and send the print job to the selected printer. At the Release Station, the patron will be prompted to enter his/her user name and password. Upon verification, the print job will be released.

With ITC Systems' Remote and Wireless Printing, no print driver is needed and is ideal for large volume usage.



FEATURES & BENEFITS COMPARISON

Server: Module 6040-S

Features:

- Supports PCL and PostScript Printers
- Unlimited queues and/or printers
- Interfaces with Multiplan for on-line print tracking and charging

Benefits:

- Used in larger networked environments
- Counts pages reducing network traffic to print release stations
- Tracks all network printing

Client Release Station: Module 6040-C

Features:

- Supports PCL and PostScript Laser Printers
- Calculates job costs per printed page
- Easy to set up and audit information on print jobs
- Optional password protection for security of Print jobs

Benefits:

- Can be used in a networked PC or Mac environment
- Jobs can be password protected when used with Popup
- Ideal for 25-30 PC environment per release station

Pop Up for PC: Module 6040-PU

Features:

- Supports PCL and PostScript Printers
- Enables patrons to uniquely name their Print Job's Job Name, User Id and optionally add a password
- Page counting can be implemented by Popup
- Unlimited queues and/or printers

Benefits:

- Offers ability to secure documents for printing with a password
- User can view cost of printing prior to releasing each print job
- Staff Popup model allows for tracking of printing by Department and/or User without a Release Station
- Green Solution: Awareness of Print Costs reduces the Volume of unnecessary Printing

PC Paytron: Module 6040-PAY

Features:

- Supports PCL and PostScript Printers
- Compatible with a variety of card systems
- Calculates cost per page printed
- Easy to set up and audit information on print jobs
- Operates in both network and stand alone printing environments
- Cost recovery for computer usage
- Computer usage rates can be set based on time intervals
- Customizable alert message to notify patrons when limited funds remaining

Benefits:

- Ideal for a Business Center, Web Cafe, Hotel environment
- Variety of payment methods provides ease of use
- Promotes customer loyalty by incorporating gift cards
- Payments made at user's PC, no release station required
- Charge for time and print on PC

Remote and Wireless Printing: Module 6040-RP

Features:

- Print drivers not required
- Universal Windows driver with LDAP user authentication
- Bridges wireless networks, LAN, and extranets for printing

Benefits:

- Facilitate mobile printing in locations where wireless access is available
- Reduce the cost associated with helping students configure laptops for printing
- Provide easy access to printers in libraries, computing labs, residences and common areas

Our range of print management solutions will eliminate wasted paper, recover printing supplies, reduce labor costs, and improve access to electronic and hard copy service.

All of this points to being environmentally friendly and a supporter of all things green.

ITC Systems... Integrated Transaction Control Solutions for Tomorrow™

800 Fee Fee Road
St. Louis, MO 63043

Tel: 314.872.7772
Fax: 314.872.3353

49 Railside Road
Toronto, ON M3A 1B3

Tel: 416.289.2344
Fax: 416.289.4790

www.itcsystems.com

© ITC Systems 2010. Printed in Canada.